

# NILIMA NANOTECHNOLOGIES

## AREAS OF APPLICATION: Nanoman Universal

**Nanoman Universal** can be used where

- Moisture, dampness, humidity, condensation and water can cause or has already caused malfunctioning and/or damage.
- Electrical and electronic components and systems that have to be protected from humidity and the damage caused by it.
- Electric contacts, motherboards, fuses and switches which need protection against water, humidity, dampness, moisture and corrosion.
- Screws have to be loosened and/or lubricated or metal parts that have to be protected against rust or corrosion.

<p><b>A</b> Adjustable valves Advertising lights Alarm systems Aquariums Avionics</p> <p><b>B</b> Buzzers Battery contacts Battery-powered drills Battery screwdrivers Battery-powered tools Bells / buzzers Bicycles / Bike lights Boilers (electrical ) Breweries Building and path lighting Building site lamps Buses Butcher machinery</p> <p><b>C</b> Camping Car washings Caravans Cars CEE sockets Chip card readers Christmas lighting Circular saws Code locks in outside areas Coils Coin counters Commercial vehicles Computer keyboards Computers Connection terminals Construction machinery Control cabinets Control engineering</p>	<p><b>D</b> Deep fat fryer Detonators Dish washers Distribution boxes Door bells Door locks Door operators Door wiper contacts Drills Dynamos</p> <p><b>E</b> Electric motors Electrical devices Electrical door and window openers Electrical systems in general Electronic modules Emergency lamps Emergency power stations Escalators Event-management devices</p> <p><b>F</b> Fans Fuel systems Flashlights Floodlights Fog machines (especially event management) Fuse-boxes Fuses Foodstuff machinery industry</p> <p><b>G</b> Garage door openers (electric) Garages Garden lamps Garden power sockets Garden pumps Glow lamps Grinding machines</p>
--	---

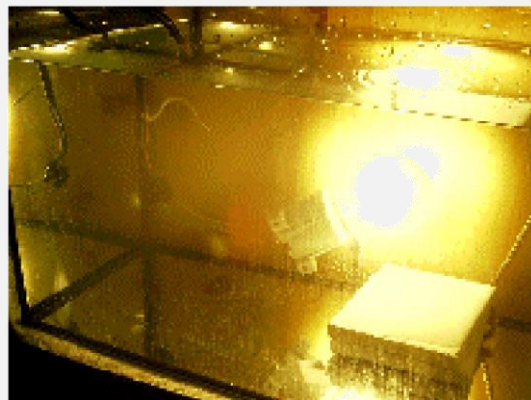
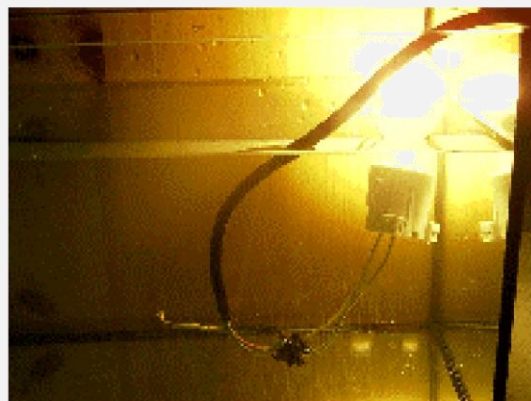
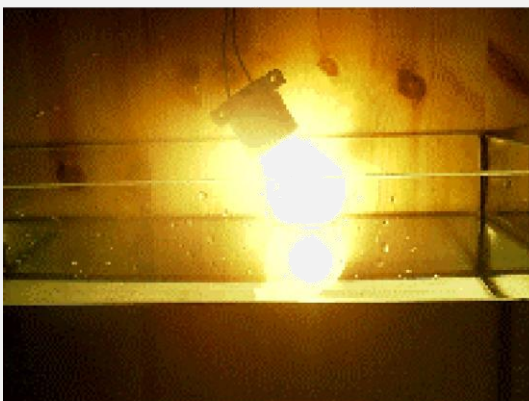
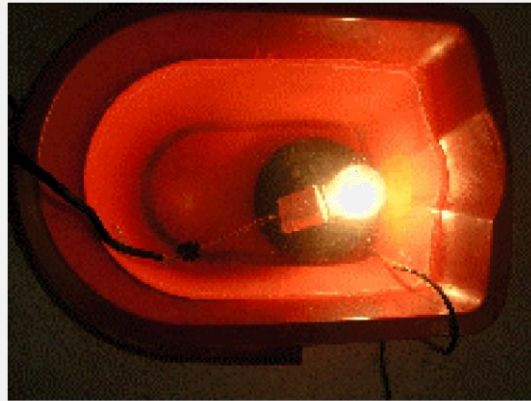
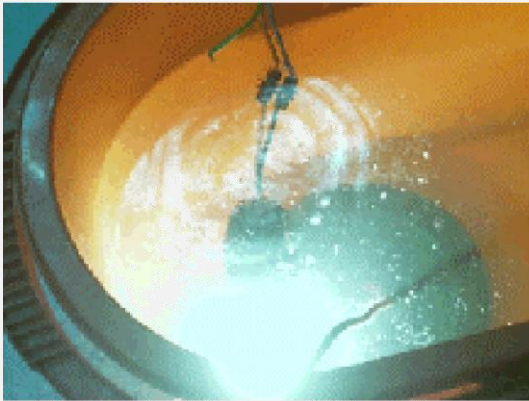
# NILIMA NANOTECHNOLOGIES

AREAS OF APPLICATION: **Nanoman Universal**

<p><b>H</b></p> <p>Hammer drills Hand lamps Heating equipment High-pressure cleaners Hydraulic presses Hydraulic pumps</p> <p><b>I</b></p> <p>Ignition systems Illumination systems Industrial lamps Installation relays Intercom systems</p> <p><b>O</b></p> <p>Outside lamps Outside sensors</p> <p><b>L</b></p> <p>Lamps LED and OLED lamps Lifters Light chains Light systems LNB's Locking systems Locks (door locks) Loudspeaker connectors Low-voltage applications in general</p> <p><b>M</b></p> <p>Marine motors Metal cables Model building in general Motor saws contacts Motor scooters Motorcycle electronics Motorcycles in general</p> <p><b>O</b></p> <p>Off-road vehicles</p> <p>Open-air festivals Optical / acoustic switches</p> <p><b>P</b></p> <p>Party illuminations Pin code systems Plug strips Pool pumps Power supplies Power transformers Pumps</p>	<p><b>R</b></p> <p>Racing bikes Racing cars Rain sensors Rainwater pumps Receivers Relay contacts Roof ventilators</p> <p><b>S</b></p> <p>Sat systems Saws (all kinds) Shredding systems Signal systems Ski lifts Sockets Spark plugs Stage lighting Street lamps Swimming-pool controllers Switches (optical and mechanical)</p> <p><b>T</b></p> <p>Telecommunications Terminal systems Thermostats Timers Toys Tractors Traffic lights Trailer couplings Transformers</p> <p><b>U</b></p> <p>Underwater lighting</p> <p><b>V</b></p> <p>Valve drives Video systems</p> <p><b>W</b></p> <p>Wall lamps Warning lights Washing machines Weapons Weather sensors Winches Wind sensors Wiper contacts Weighing systems</p> <p><b>Y</b></p> <p>Yacht electronics</p>
--	--

# NILIMA NANOTECHNOLOGIES

Areas of APPLICATION: **Nanoman Universal**



Product of **NILIMA NANOTECHNOLOGIES**, 1F, Gomti Bhavan, 27E, French Road, Chowpatty, Mumbai 400007.

T: 91 22 23637479, M: 91 9920987611